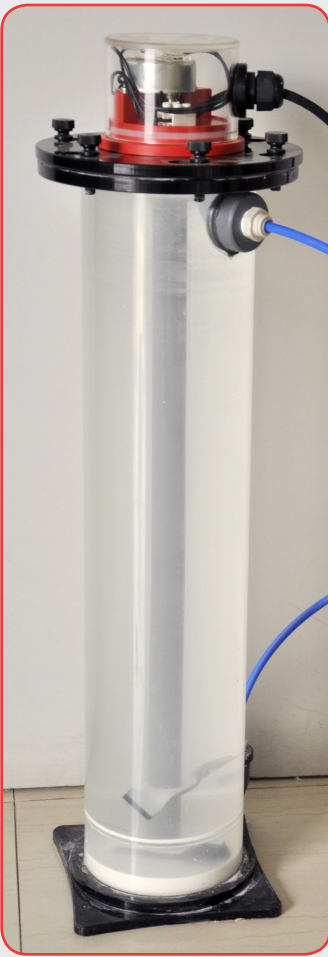




# REEF OCTOPUS®

## User's Guide

### REEF OCTOPUS KALKWASSER STIRRER KS-100



Thank you for purchasing a "REEF OCTOPUS" Kalkwasser Stirrer. For optimum performance and safety, please read this instruction manual carefully and keep it handy for future reference.

#### Description

The addition of a saturated solution of Kalkwasser is considered the first method of supplying the reef aquaria with Calcium and Alkalinity while maintaining a high PH. Your new Octopus Kalk Reactor gently stirs powdered kalkwasser into RO/DI water creating a clear super saturated form of Lime water aka Kalkwasser. Due to its high pH of 12.4 a slow addition is required to avoid a dangerous rise of the pH value in the aquarium. An important advantage of the so called "Kalkwasser-method" is the precipitation of phosphates.



**\*The Kalk Stirrer uses a motor that has a lifetime of about 1500 hours. Please don't run unit continuously.**

**\*Avoid adding excessive calcium powder.**

#### Safety

- The socket for the transformer and timer must be located away from moisture or water.
- Remove the transformer from the power source when cleaning the unit or adding Kalkwasser.
- Be careful not to drop the lid into water, the motor is not water proof.

#### Technical Data

Voltage: 110V / 12V  
Power consumption: ≤ 15 Watt  
Life time: 1500h (for motor)

#### WARRANTY

-Reef Octopus acrylic products come with a ONE (1) YEAR Limited Warranty from the date of the retail purchase by the original end-user.

-If a material or workmanship defect arises and a valid claim is received within the Warranty Period, Reef Octopus will replace the case only.

-Reef Octopus cannot be held liable for damages to personal property due to misuse or improper care and maintenance of case and o-ring seals.

-Reef Octopus warranty does not, under any circumstance; cover the replacement or cost of any electronic device or personal property inside or outside of the case.

#### Setup & Operation Instructions for Reef Octopus Kalkwasser Reactor/Stirrer

1. Place the reactor in a location where the outlet is higher than the sump. The quick connect outlet is where the kalkwasser will drip from and typically hung over the sump in a high flow area away from any pumps. The output must flow downhill to the sump area.
2. Connect the feed pump from your top off container to the Kalkwasser reactor with 1/4 RO tubing. Peristaltic pumps are preferred due to the high level of accuracy and anti siphon characteristics. (If you are using a peristaltic pump then skip to step #4)
3. If you are using a feed pump like Tom's Aqualifter then the input tubing should be placed in your reservoir with RO/DI water. Connect the outlet of the pump to a short piece of 1/4" tubing and install a tee fitting with one end securely mounted several feet above the water level of your top off reservoir and the other going to the reactor. The tee is placed in the line to create a siphon break. You may also use a small pump such as a maxijet modded with a fitting on the output to feed water to the reactor. You will have to use a check valve in the line to prevent any back siphoning into your reservoir.
4. The Kalkwasser reactor should be filled 2/3 of the way with RO/DI water.
5. Add enough kalk powder to fill the reactor with approximately 3/4 – 1cup of kalkwasser. The idea is that the twin blades create a slow motion that gently disturbs the kalk in to solution. (Too much kalk will place stress on the motor and can cause pre-mature failure) Allow the solution to settle for 15 minutes prior to turning the reactor on. Now you are ready to plug the reactor's transformer into a power source and begin to dose saturated Kalkwasser to your aquarium. The stirrer should be set on a controller to run ever 2 hours for approximately 10-15 minutes. **Do not run these units 24/7.**

#### Maintenance

Fresh Kalkwasser powder should be added to the reactor every 2-3 weeks by removing some of the water within the reactor prior to adding the kalk powder. The whole reactor should be rinsed clean with hot water about every month to prevent any build up and to remove what doesn't dissolve into saturated lime water. Every six months the reactor should be removed from the system and cleaned with vinegar and rinsed well before re-installing the unit.

If your Reef Octopus product does not appear to be working correctly or believe to be defective, please contact your local dealer. You can also contact us directly at 985-781-9078 or visit our website at [www.coralvue.com](http://www.coralvue.com). Thank you for choosing Reef Octopus!



38190 Commercial Ct. | Slidell, LA 70458  
Ph: 985.781.9078 | Fx: 985.781.9081  
Visit: [www.CoralVue.com](http://www.CoralVue.com)

\*We hereby reserve the rights to modify and adjust the specification or designs of our products without a prior notification.